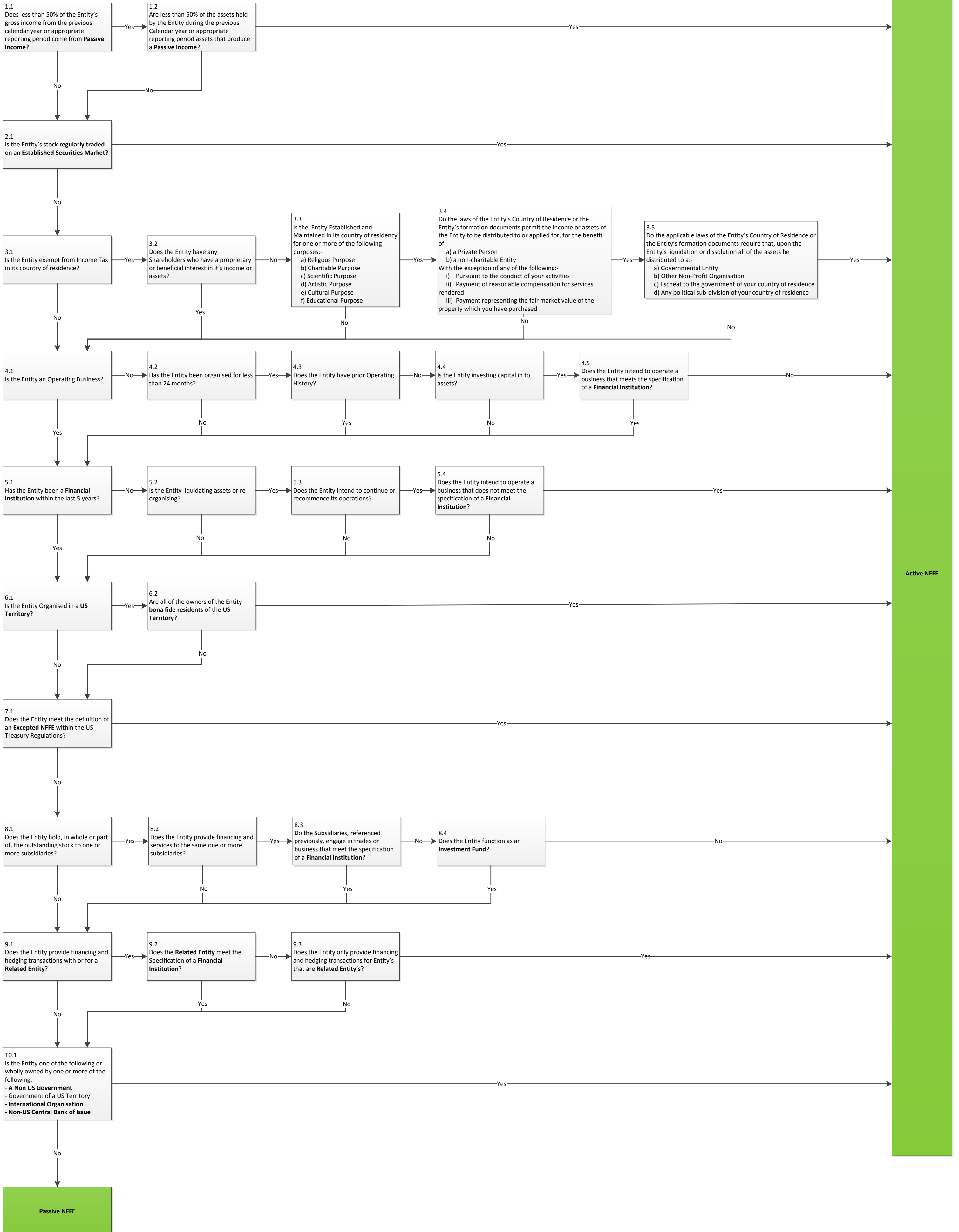


FATCA NFFE Active / Passive Flow

Disclaimer – Please note, this flow provides factual information and does not constitute as Tax Advice. Furthermore this flow is to help you ascertain what type of Non Financial Foreign Entity classification you are. This flow is only to be used by Entities that have identified as not being a Foreign Financial Institution in accordance with the definition in the glossary.



Active NFFE

Passive NFFE